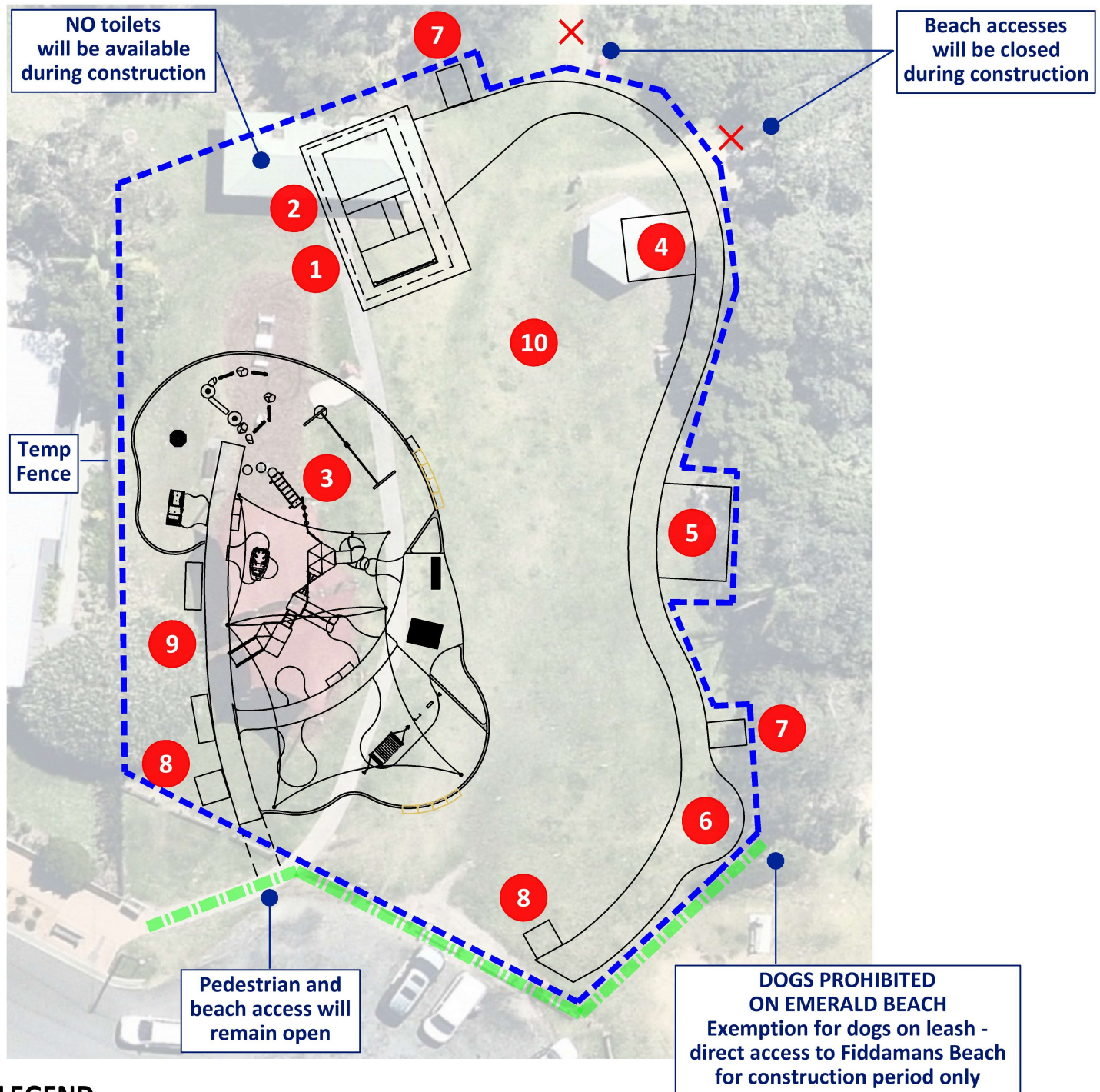


# EMERALD BEACH RESERVE RENEWAL

## Construction begins February 2025



### LEGEND

1. New 3 cubicle accessible toilet block
2. Lifeguard storage
3. New playground with shade sails and picnic table
4. 4x4m shelter and BBQ
5. 6x4m shelter with picnic tables, and power
6. Concrete connecting pathways
7. Beach showers
8. Bike racks
9. Seats
10. Drainage improvements



Project funding of \$750,000 was provided by the City of Coffs Harbour and Coffs Coast Regional Park

[www.coffsharbour.nsw.gov.au/Your-Council/Projects-and-initiatives/Current-projects](http://www.coffsharbour.nsw.gov.au/Your-Council/Projects-and-initiatives/Current-projects)

