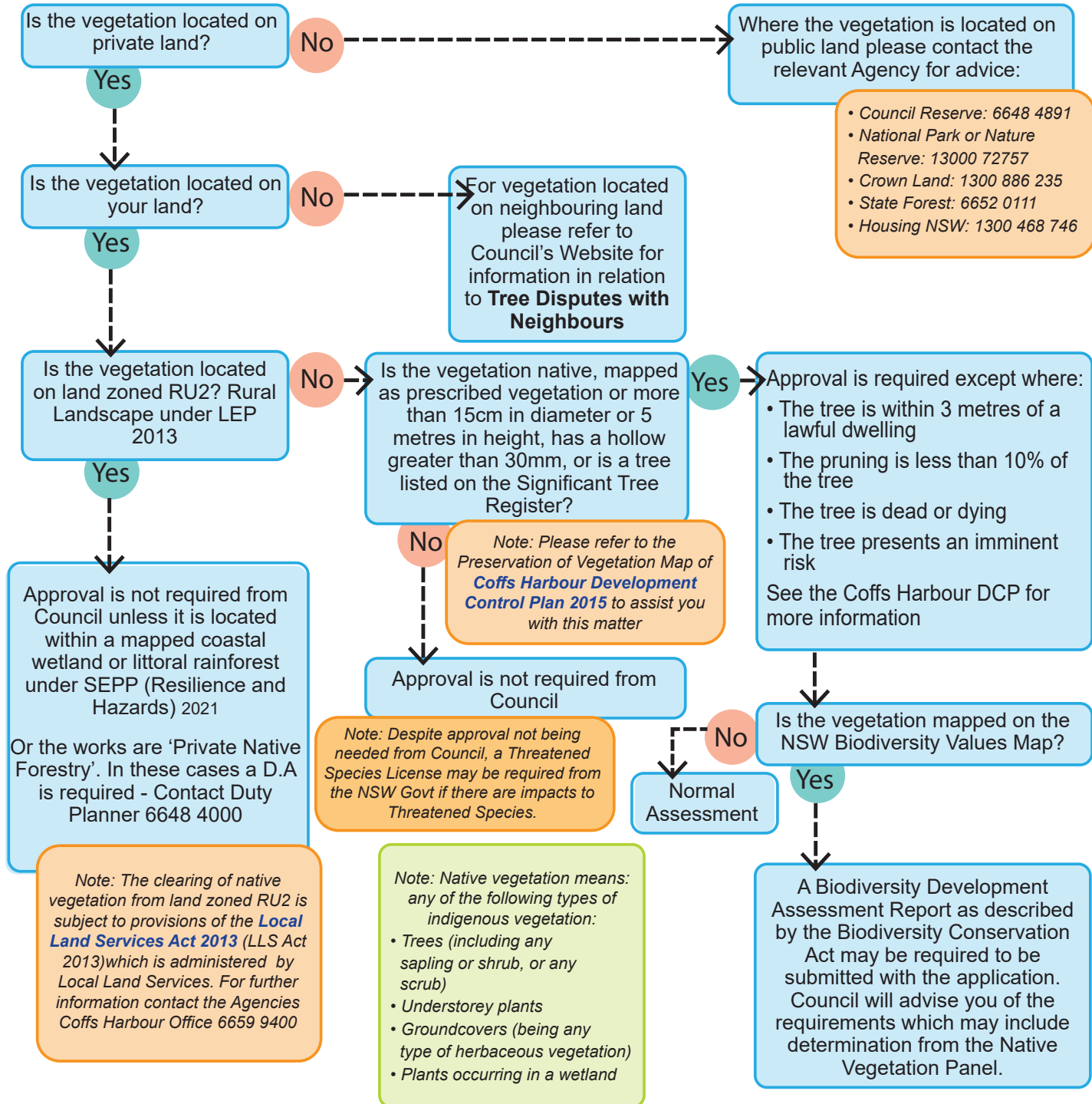


REMOVING NATIVE VEGETATION FACT SHEET

This process is for native vegetation removal not associated with an activity requiring Development Consent. When an activity requires consent, e.g. building a house, the vegetation removal will be assessed as part of the Development Application (regardless of the land use zone).

First check the RFS 10/50 online tool for exemptions to this process:
www.rfs.nsw.gov.au/plan-and-prepare/1050-vegetation-clearing/tool#tool



Exemptions apply for certain activities under the Biodiversity Conservation Act 2016, Rural Fires Act 1997, activities within a State Forest or on land reserved under Forestry Act 1916, any action authorised under the Electricity Supply Act 1995, the Roads Act 1993 or the Surveying and Spatial Information Act 2002 or any noxious weeds. Certain exemptions also apply for Educational Establishments. Please refer to Coffs Harbour Development Control Plan 2015 for further information.