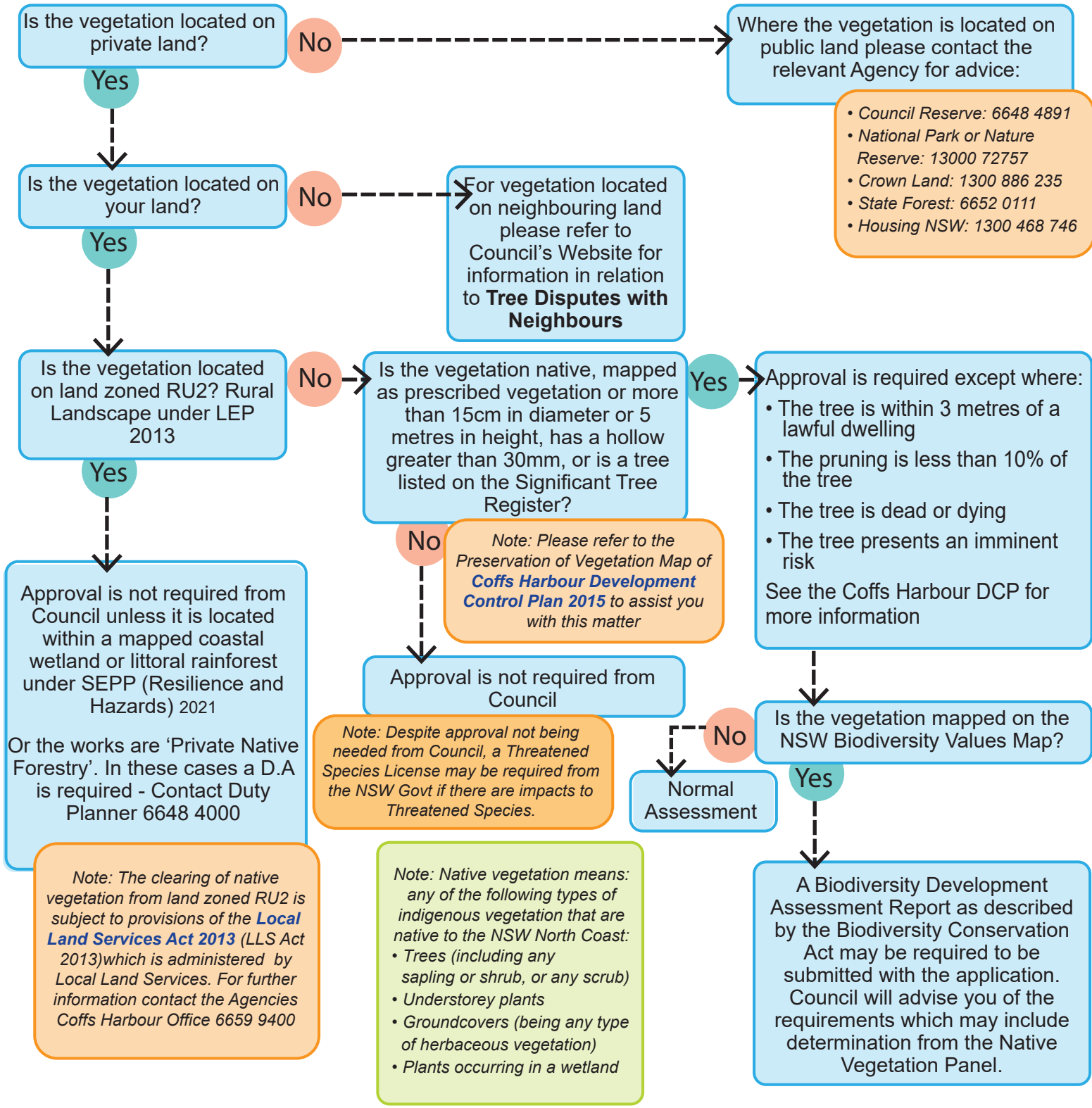


This process is for native vegetation removal not associated with an activity requiring Development Consent. When an activity requires consent, e.g. building a house, the vegetation removal will be assessed as part of the Development Application (regardless of the land use zone).

First check the RFS 10/50 online tool for exemptions to this process:
www.rfs.nsw.gov.au/plan-and-prepare/1050-vegetation-clearing/tool#tool



- Council Reserve: 6648 4891
- National Park or Nature Reserve: 13000 72757
- Crown Land: 1300 886 235
- State Forest: 6652 0111
- Housing NSW: 1300 468 746

Note: Please refer to the Preservation of Vegetation Map of Coffs Harbour Development Control Plan 2015 to assist you with this matter

Note: Despite approval not being needed from Council, a Threatened Species License may be required from the NSW Govt if there are impacts to Threatened Species.

Note: Native vegetation means: any of the following types of indigenous vegetation that are native to the NSW North Coast:

- Trees (including any sapling or shrub, or any scrub)
- Understorey plants
- Groundcovers (being any type of herbaceous vegetation)
- Plants occurring in a wetland

Note: The clearing of native vegetation from land zoned RU2 is subject to provisions of the Local Land Services Act 2013 (LLS Act 2013) which is administered by Local Land Services. For further information contact the Agencies Coffs Harbour Office 6659 9400