

BRELSFORD PARK

COFFS HARBOUR

PREPARED FOR
COFFS HARBOUR CITY COUNCIL
APRIL 2023



'Place Design Group would like to acknowledge the Gumbaynggirr people who are the traditional custodians of the land of Coffs Harbour. We would also pay our respects to elders both past and present of the Gumbaynggirr people and extend that respect to other Aboriginal people...'









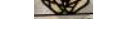





CONCEPT MASTER PLAN

KEY

- 1 EXISTING SKATE PARK
- 2 PROPOSED VILLAGE GREEN
- 3 PROPOSED CIVIC PLAZA
- 4 PROPOSED PLANTING
- 5 AMPHITHEATRE WITH STAGE / SHELTER
- 6 EXISTING AMENITIES BUILDING
- 7 EXISTING SIGNIFICANT VEGETATION TO BE RETAINED
- 8 EXISTING INCLUSIVE PLAYGROUND
- 9 CONCRETE PAD FOR FOOD TRUCK / STALLS
- 10 PROPOSED AMENITIES
- 11 SECONDARY AMPHITHEATRE
- 12 EVENT SPACE
- 13 PICNIC AREA
- 14 SHELTERED PICNIC SETTING

LEGEND

-  TURF
-  PRIMARY PAVING
-  FEATURE PAVING
-  DECOMPOSED GRANITE
-  GARDEN BED
-  EXISTING ROAD
-  BUILT
-  CIVIL PLAZA CANOPY STRUCTURES
-  SEATING WALL
-  EXISTING TREES
-  PROPOSED TREES
-  REMOVED TREE



Landscape Concept Package
BRELFORD PARK, COFFS HARBOUR



DATE	PROJECT NO.	REVISION	PAGE NO.
27/04/2023	2522037	05	3
0 8 16	24 32	40M/ 1:800@A3	



Place Design Group Pty Ltd
3B/830-832 Elizabeth Street
Waterloo, NSW
2017, Australia
T + 61 2 9290 3300

DETAIL PLAN - CIVIC PLAZA 'CREEK TO COAST'

The vision for Brelford Park Civic Plaza draws on the concept of Creek to Coast, illustrating the path from mountains through the creek to various coves and beaches along the Coffs Harbour Coast. The proposed site provides a new community open space to the surrounding neighbourhood. The designed pattern/ intricacy of the pathways, catenary lighting, seating walls and resting points draw people to meet and experience Brelford Park.

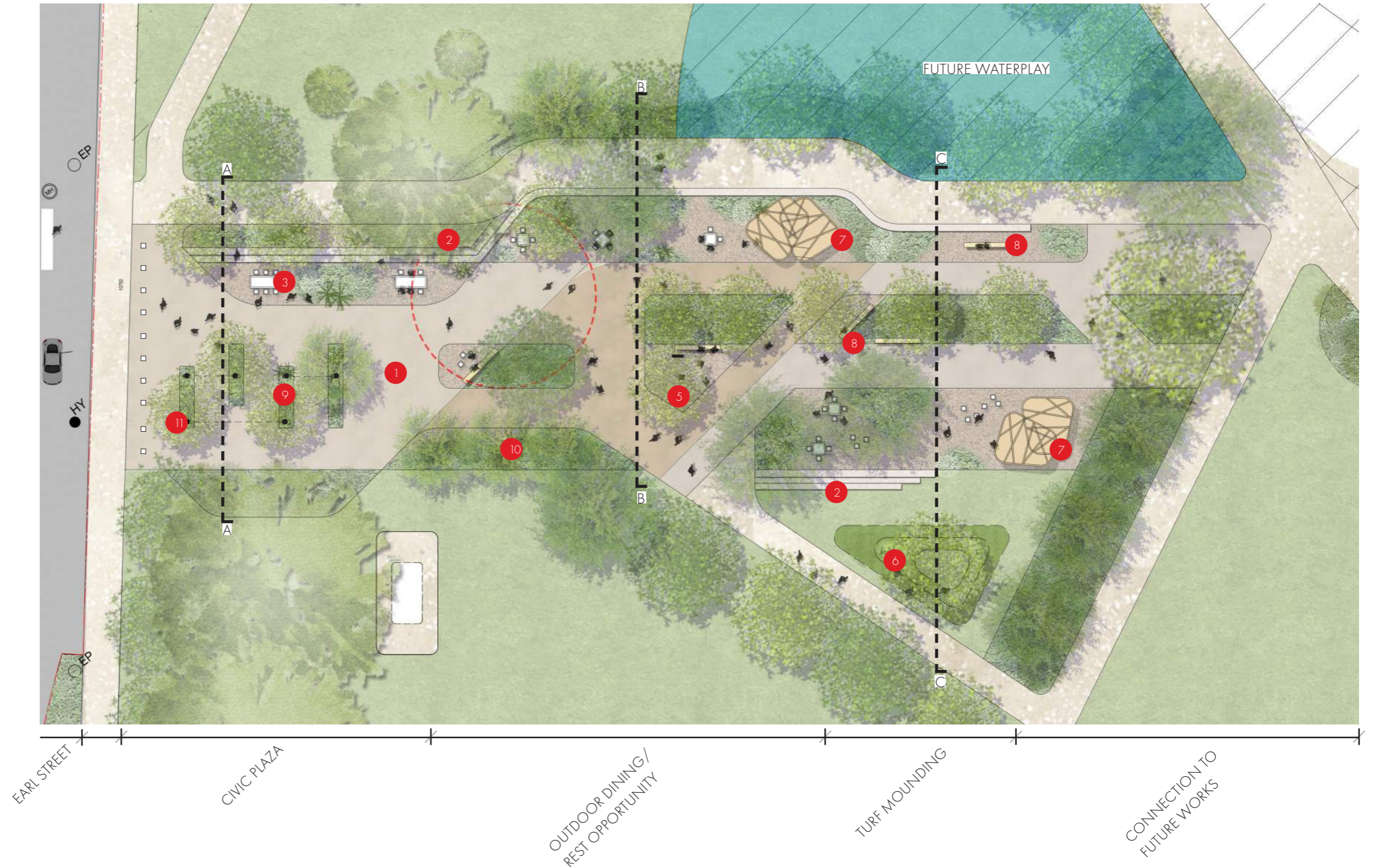
Avenue trees are aligned along the main east-west axis to bring the users from the perimeter of the park into the civic plaza. The materiality draws on the natural coastal landscape, and contains warm tones with various areas to either congregate, rest or experience the diversity of spaces.

KEY

- 1 CIVIC PLAZA
- 2 SEATING WALL
- 3 PICNIC SETTING
- 4 PLANTING ON GRADE
- 5 CUBE SEATING
- 6 TURF MOUNDING
- 7 CANOPY STRUCTURES
- 8 IN-SITU CONCRETE WALL SEAT
- 9 PLANTER
- 10 PLANTING ON GRADE
- 11 CATENARY LIGHTING

LEGEND

- TURF
- PRIMARY CONCRETE
- SECONDARY CONCRETE
- PLANTING
- EXISTING ROAD
- SEATING WALL
- EXISTING TREES
- PROPOSED TREES
- REMOVED TREE
- CATENARY LIGHTING



Place Design Group Pty Ltd
3B/830-832 Elizabeth Street
Waterloo, NSW
2017, Australia
T + 61 2 9290 3300

Landscape Concept Package
BRELFORD PARK, COFFS HARBOUR



DATE	PROJECT NO.	REVISION	PAGE NO.
27/04/2023	2522037	05	4
0 4 6 8 10	12M/ 1:250@A3		

DETAIL PLAN - CIVIC PLAZA 'CREEK TO COAST'

Brelsford civic plaza includes a range of spaces spanning from open concrete areas which are an opportunity to meet and gather, whilst also lending to markets and other events. The linear forms capture directional lighting and filet people through the space. Views from park avenue extend through the civic plaza, which benefits public surveillance and ease of access.

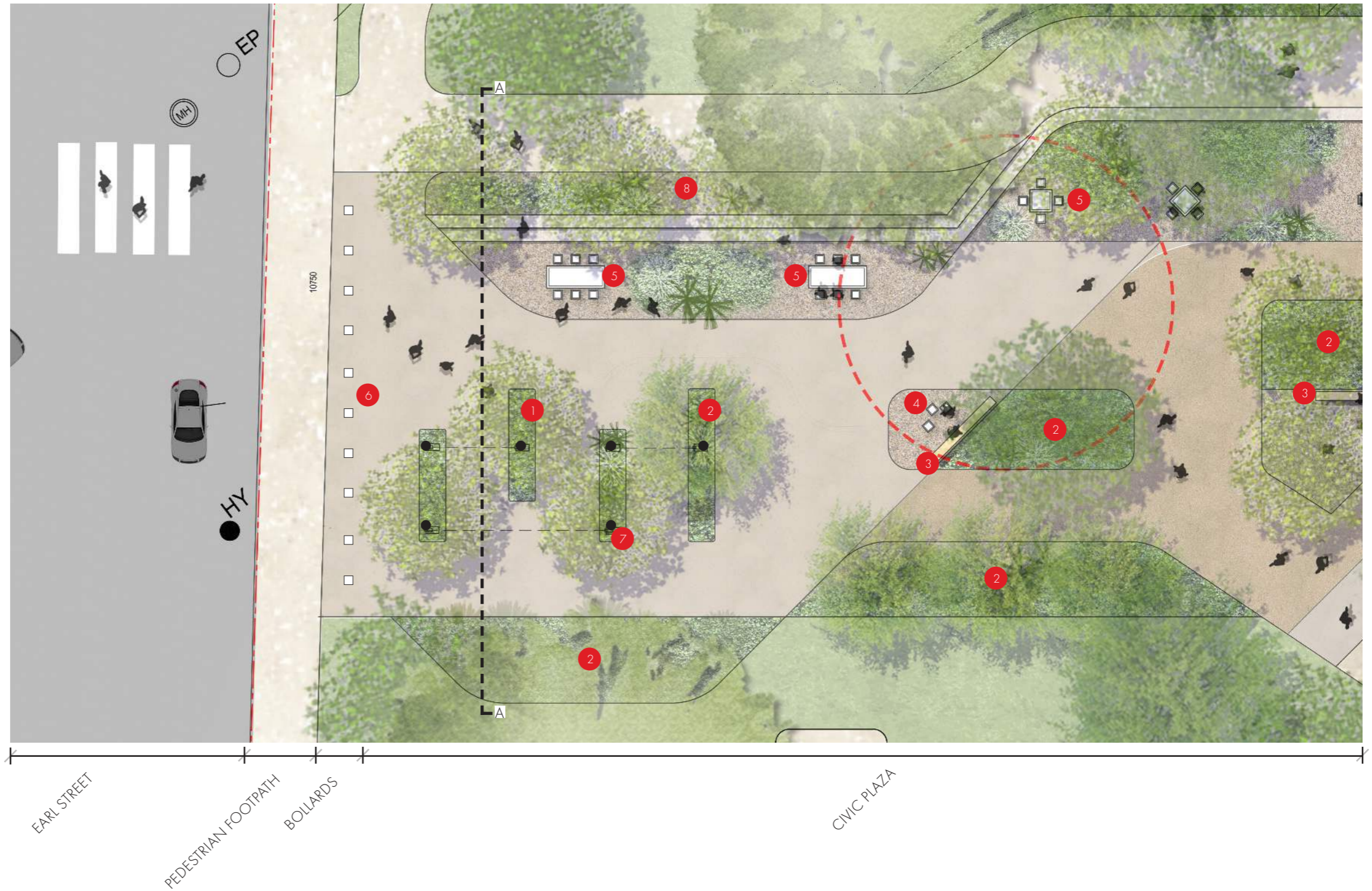
A feature insitu concrete wall runs through the site, terracing in certain area adding a layer of flexibility to the space whilst tying in nicely with the original design intent of creek to coast forms. Decomposed granite and planting bleeds through the space, outlining spaces for rest and dining.

KEY

- 1 PROPOSED TREES
- 2 PROPOSED PLANTING ON GRADE
- 3 PROPOSED CUSTOM SEATING
- 4 PROPOSED CUBE SEATS
- 5 PROPOSED PICNIC SET
- 6 PROPOSED BOLLARDS
- 7 CATENARY LIGHTING
- 8 RAISED PLANTING

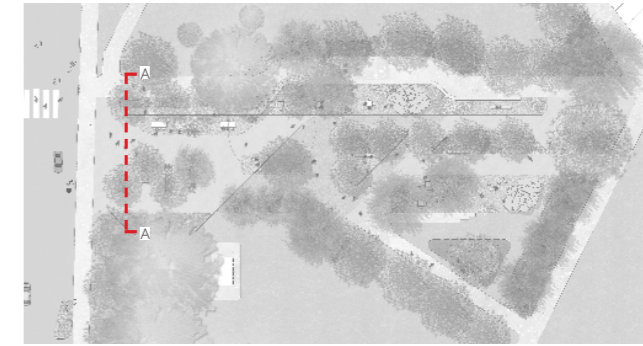
LEGEND

- TURF
- DECOMPOSED GRANITE
- PRIMARY CONCRETE
- SECONDARY CONCRETE
- PLANTING
- EXISTING ROAD
- CATENARY LIGHTING

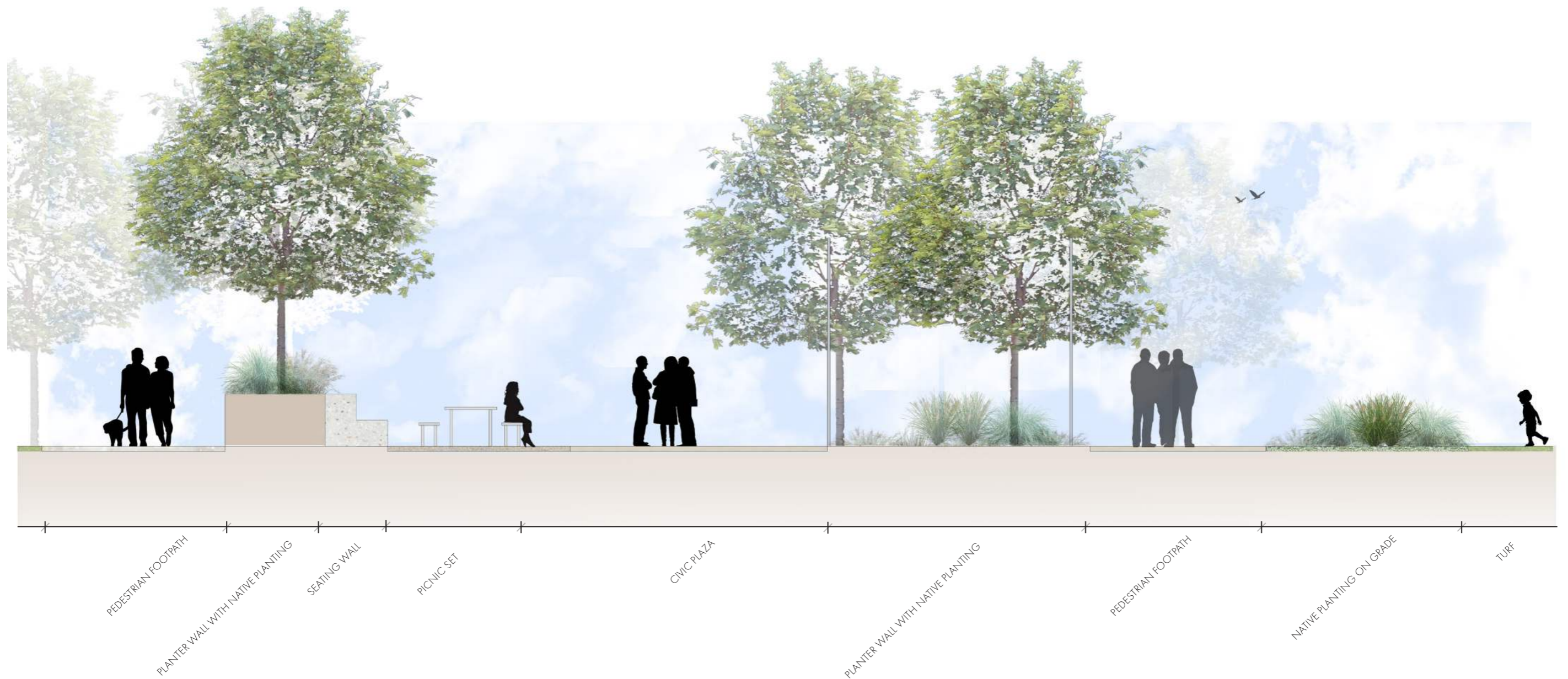


SECTION - CIVIC PLAZA

CIVIC PLAZA - AA



KEY



CIVIC PLAZA - AA



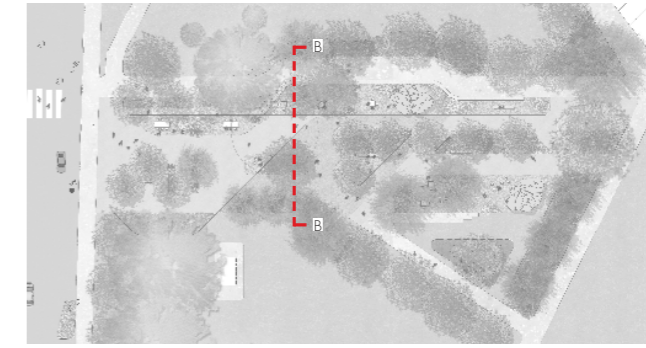
Place Design Group Pty Ltd
 3B/830-832 Elizabeth Street
 Waterloo, NSW
 2017, Australia
 T + 61 2 9290 3300

Landscape Concept Package
 BRELSFORD PARK, COFFS HARBOUR

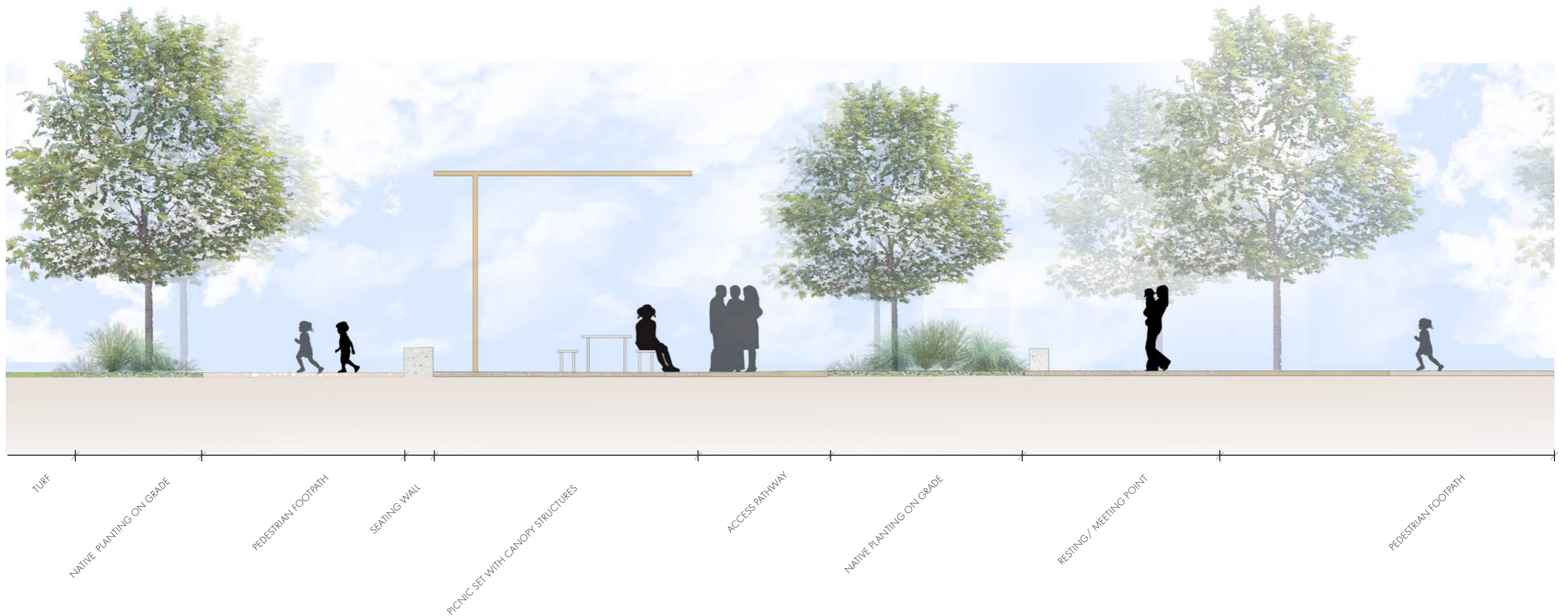
DATE	PROJECT NO.	REVISION	PAGE NO.
27/04/2023	2522037	05	6
0	0.5	1	1.5
		2	
2.5M/ 1:40@A3			

SECTION - CIVIC PLAZA

CIVIC PLAZA - BB



KEY



TURF
 NATIVE PLANTING ON GRADE
 PEDESTRIAN FOOTPATH
 SEATING WALL
 PICNIC SET WITH CANOPY STRUCTURES
 ACCESS PATHWAY
 NATIVE PLANTING ON GRADE
 RESTING / MEETING POINT
 PEDESTRIAN FOOTPATH



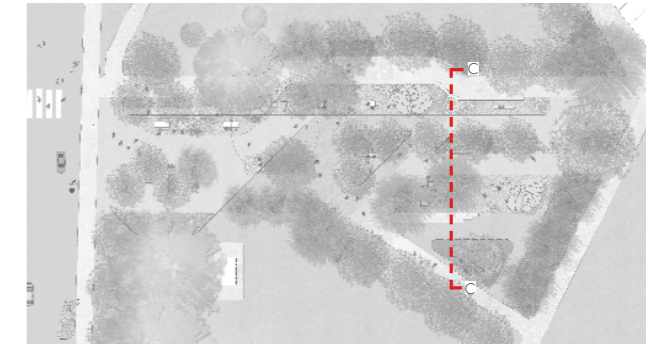
Place Design Group Pty Ltd
 3B/830-832 Elizabeth Street
 Waterloo, NSW
 2017, Australia
 T + 61 2 9290 3300

Landscape Concept Package
 BRELSFORD PARK, COFFS HARBOUR

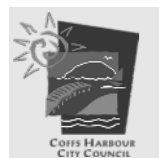
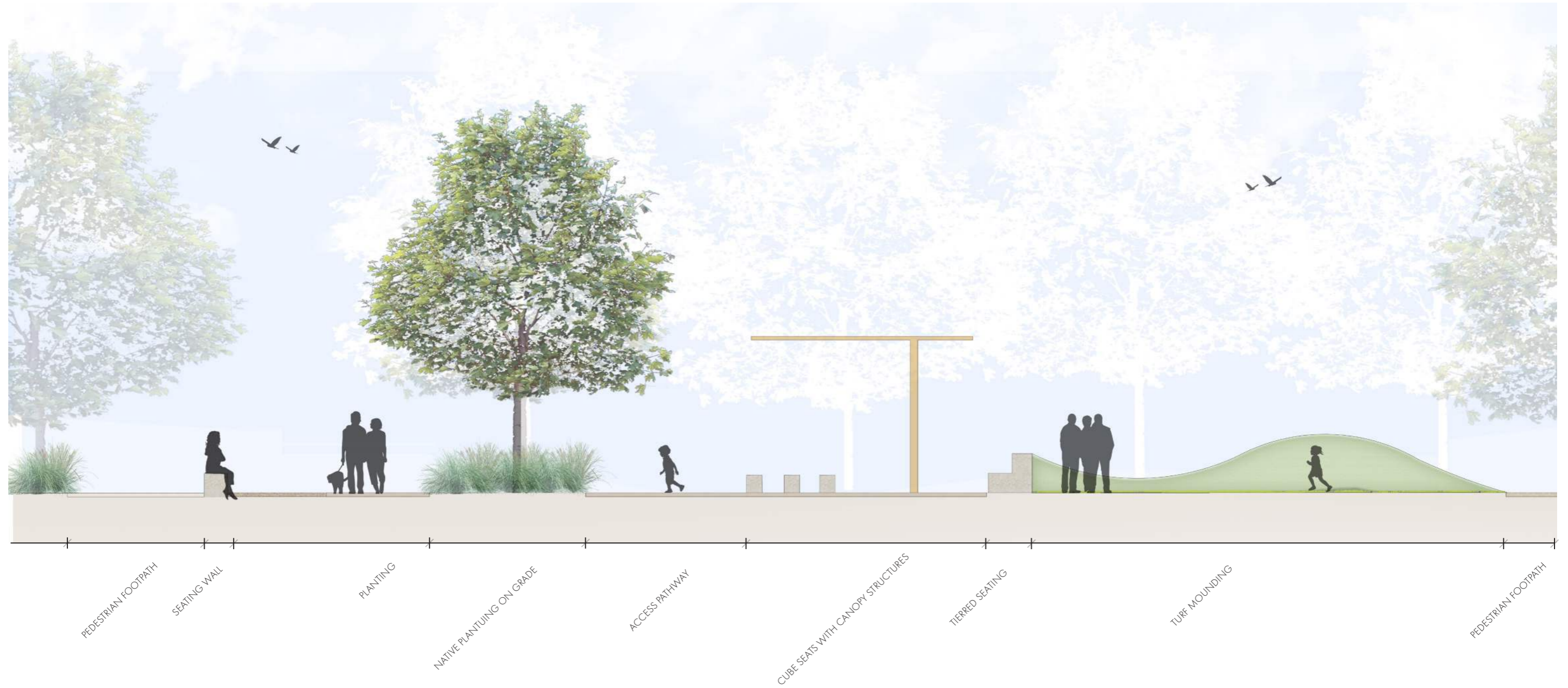
DATE	PROJECT NO.	REVISION	PAGE NO.
27/04/2023	2522037	05	7
0	0.5	1	1.5
		2	
2.5M/ 1:40@A3			

SECTION - CIVIC PLAZA

CIVIC PLAZA - CC



KEY



Place Design Group Pty Ltd
 3B/830-832 Elizabeth Street
 Waterloo, NSW
 2017, Australia
 T + 61 2 9290 3300

Landscape Concept Package
 BRELSFORD PARK, COFFS HARBOUR

DATE	PROJECT NO.	REVISION	PAGE NO.
27/04/2023	2522037	05	8
0	1	2	3M/ 1:50@A3

CANOPY STRUCTURES - CIVIC PLAZA

The design intent for the canopy structures, is to create shade elements that celebrate and strongly tie in with the surrounding Coffs Harbour Landscape drawing inspiration from existing picnic shelters and small amphitheatres on the Jetty foreshore esplanade. The shade structure creates a dynamic pattern over the civic plaza.

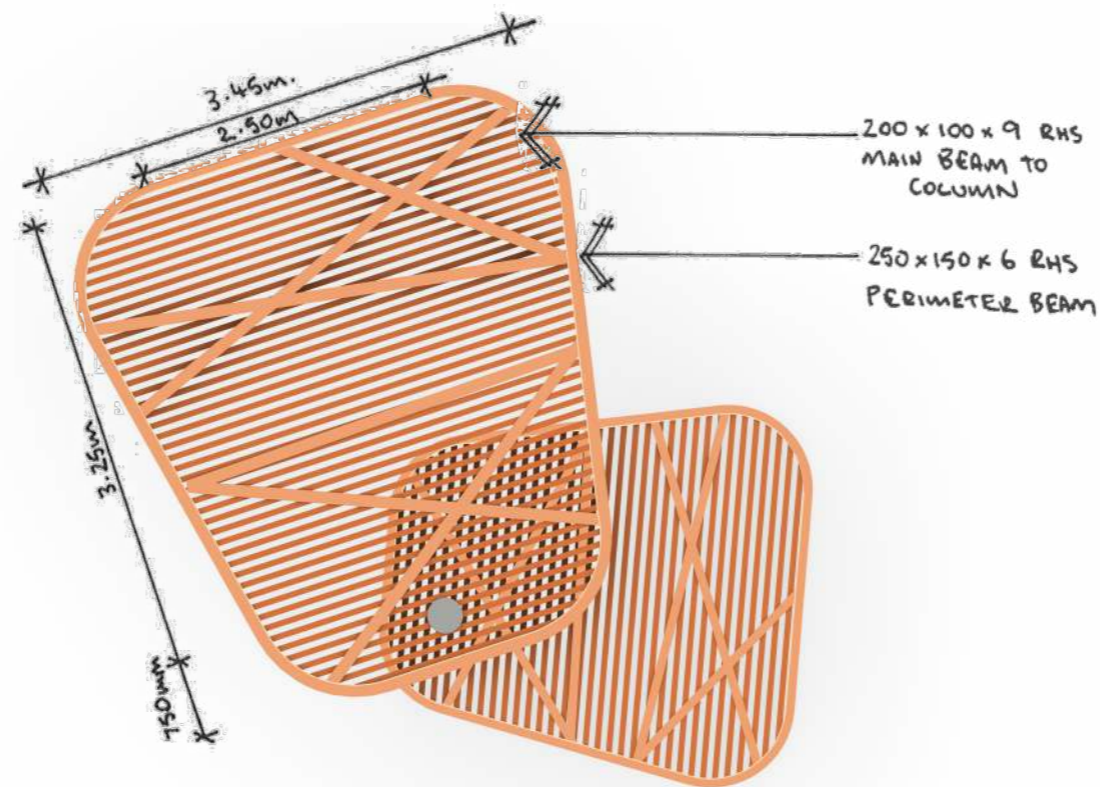
Whilst serving a functional use to rest areas, it additionally promotes user involvement and is custom to the space they would like to sit.



PERSPECTIVE 1



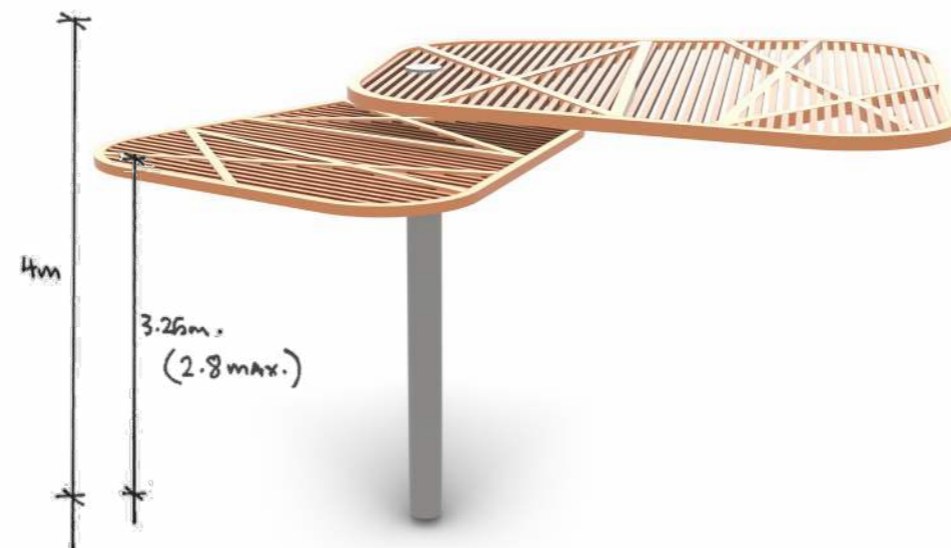
PERSPECTIVE 2



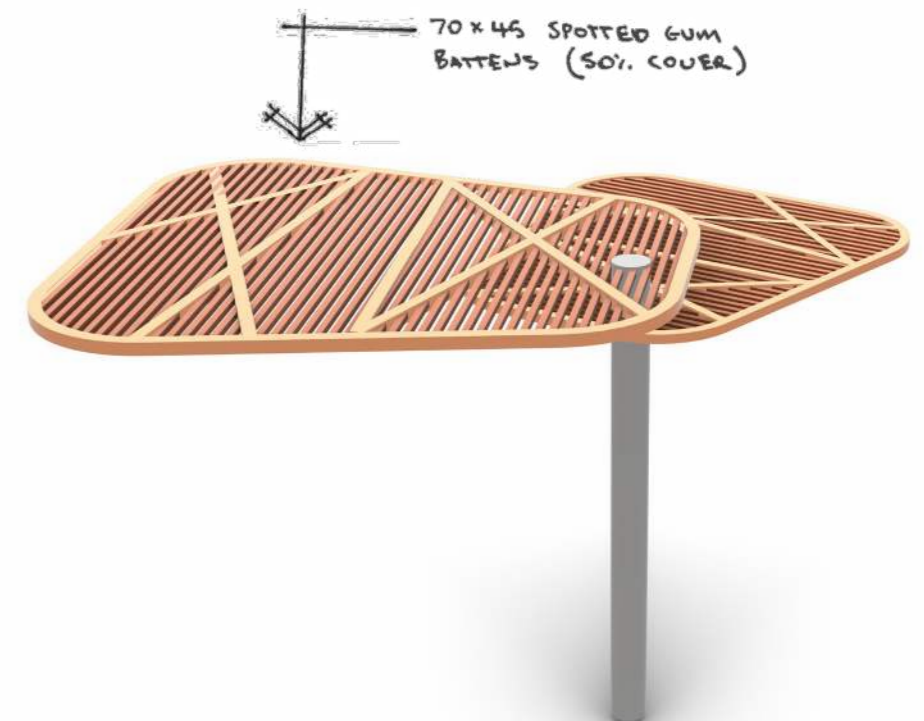
VIEW 1



VIEW 2



VIEW 3



VIEW 4



place
design
group.

Place Design Group Pty Ltd
3B/830-832 Elizabeth Street
Waterloo, NSW
2017, Australia
T + 61 2 9290 3300

Landscape Concept Package
BRELSFORD PARK, COFFS HARBOUR

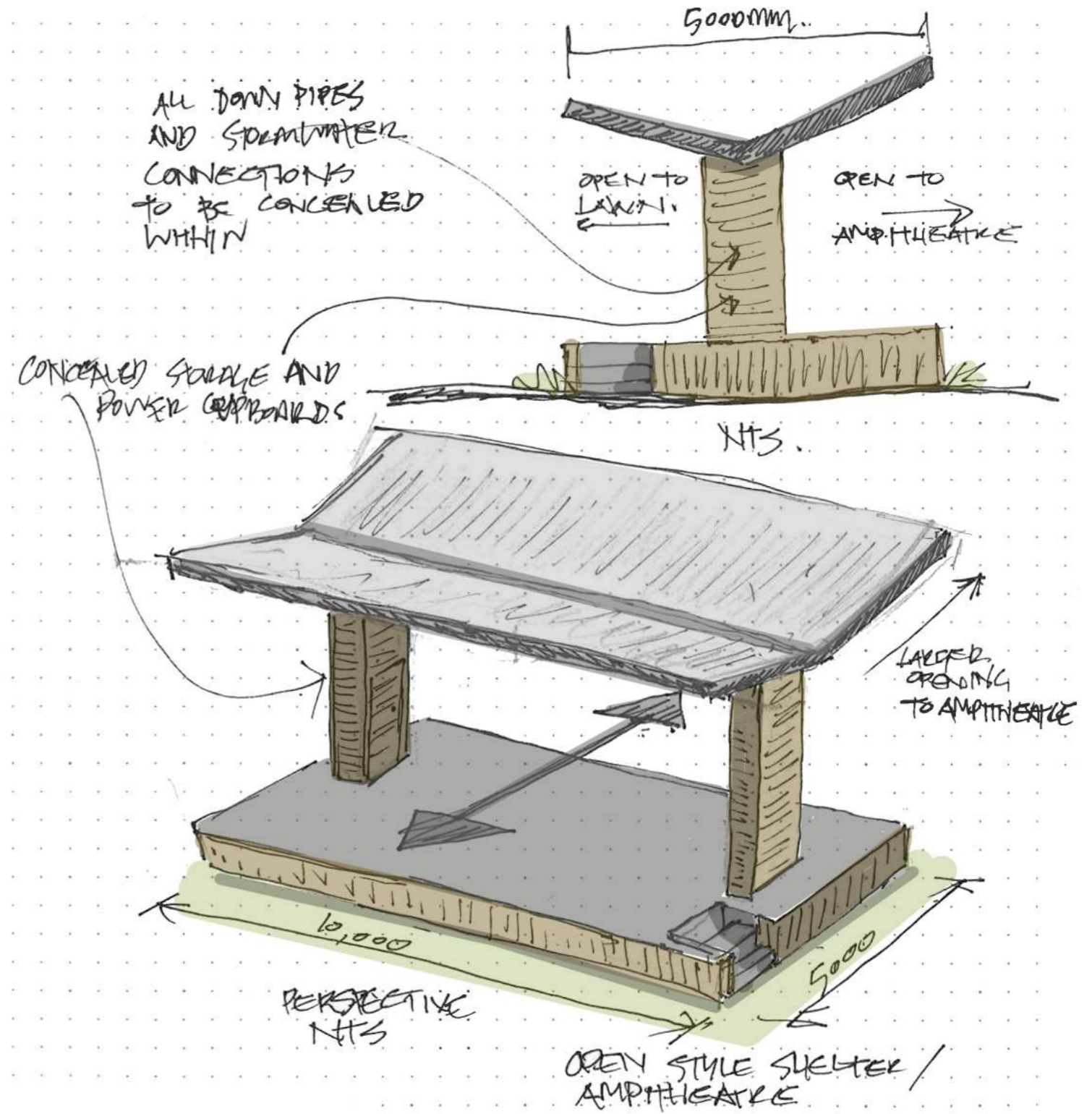
DATE	PROJECT NO.	REVISION	PAGE NO.
27/04/2023	2522037	05	9

AMPHITHEATRE STRUCTURES

The design intent for the Amphitheatre structure is to align with existing canopy structure within the area. The form relates to both the skate park shelter as well as the Jetty foreshore. With drainage and storage built into the columns. Its open form lends to viewing from both sides.

PRECEDENT 1 - SKATE PARK

PRECEDENT 2 - JETTY FORESHORE



PLANTING PALETTE

TREES



*EUCALYPTUS
SIGNATA*
SCRIBBLY GUM
15m x 15m



*MELALEUCA
QUINQUENERVIA*
PAPERBARK
25m x 10m



*EUCALYPTUS
PROPINQUA*
GREY GUM
25m x 10m



FICUS RUBIGINOSA
PORT JACKSON FIG
30m x 20m



*EUCALYPTUS
MICROCORYS*
TALLOWWOOD
45m x 25m



*EUCALYPTUS
TERETICORNIS*
FOREST RED GUM
30m x 10m



*SYNCARPIA
GLOMULIFERA*
TURPENTINE TREE
25m x 20m



*STENOCARPUS
SINUATUS*
FIREWHEEL TREE
25m x 10m



*FLINDERSIA
SCHOTTIANA*
BUMPY ASH
10m x 5m

FEATURE TREES

SHRUBS



*WESTRINGIA
FRUTICOSA*
COASTAL ROSEMARY
2m x 4m



*LEUCOPHYTA
BROWNII*
CUSHION BUSH
1m x 1m



BANKSIA SPINULOSA
BIRTHDAY CANDLES
1m x 1m



CORREA ALBA
WHITE CORREA
1.5m x 1.5m



*CALLISTEMON
VIMINALIS*
SCARLET FLAME
0.6m x 0.6m



*NANDINA
DOMESTICA*
2.5m x 1m



*GARDENIA AUGUSTA
FLORIDA*
1.2m x 1m



*PHILODENDRON
XANADU*
0.8m x 0.8m



*MELALEUCA
LINARIIFOLIA*
CLARET TOP
2.5m x 3m

STRAPPY PLANTS



*LOMANDRA
LOGNIFOLIA*
TANIKA
1m x 1m



DIANELLA CAERULEA
FLAX LILY
0.5m x 0.5m



*PENNISSETUM
'NAFRAY'*
FOXTAIL
0.6m x 0.6m



*DORYANTHES
EXCELSA*
GYMEA LILY
2m x 2m



LOMANDRA HYSTRIX
KATIE BELLES
2m x 1.5m

GROUND COVERS



*BRACHYSCOME
MULTIFIDA*
CUT-LEAFED DAISY
0.5m x 1m



*MYOPORUM
PARVIFOLIUM*
CREEPING
BOOBIALLA
0.3m x 3m



VIOLA HEDERACEA
NATIVE VIOLET
0.5m x 1m



*CAROBROTUS
GLAUCASCENES*
COASTAL PIGFACE
0.5m x 1m



place
design
group.

Place Design Group Pty Ltd
3B/830-832 Elizabeth Street
Waterloo, NSW
2017, Australia
T + 61 2 9290 3300

Landscape Concept Package
BRELSFORD PARK, COFFS HARBOUR

DATE	PROJECT NO.	REVISION	PAGE NO.
27/04/2023	2522037	05	11

MATERIALS & FINISHES

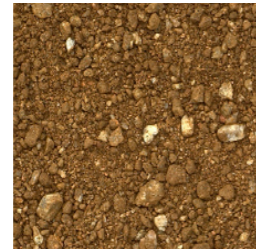
CIVIC PLAZA MATERIALS & FINISHES



PRIMARY CONCRETE
EDENSTONE
MASONRY VIA
ABC BUILDING
PRODUCTS
SMOOTH CREAM
LIMESTONE
600MM X 300MM X
45MM



SECONDARY
CONCRETE
EDENSTONE
MASONRY VIA ABC
BUILDING PRODUCTS
MACCHIATO
LIMESTONE
600MM X 300MM X
45MM



DECOMPOSED
GRANITE BROWN
GRAVEL
AUSTRALIAN NAIVE
LANDSCAPES



INSITU CONCRETE
WALL

BRELSFORD PARK MATERIALS & FINISHES



FOOTPATHS
CONCRETE
GREY
AS SHOWN



STREET FURNITURE
ARIA TABLE
WOODGRAIN BUSH
CHERRY FRAME.
WOODLAND GREY
LEGS



GRILLEX
HAMILTON BIN
CUSTOM
ENCLOSURE



STREET & GARDEN
FURNITURE
SIT BOLLARD FRAME
STAINLESS STEEL
SATINING POLISHED



PICNIC SHELTERS
'LONGREACH
SHELTER' POSTS &
FRAME - AUSTRALIAN
HARDWOOD TIMBER
ROOF -
COLOURBOND